

# THE VILLAGER



welcome to

# STONEYLANDS



**Memsaab**  
of Lavenham  
FINEST INDIAN CUISINE

**Memsaab**  
of Lavenham  
FINEST INDIAN CUISINE

# LONG MELFORD VS NEWMARKET TOWN

Thurlow Nunn Premier Division  
3pm, Saturday 4 December

Issue 11

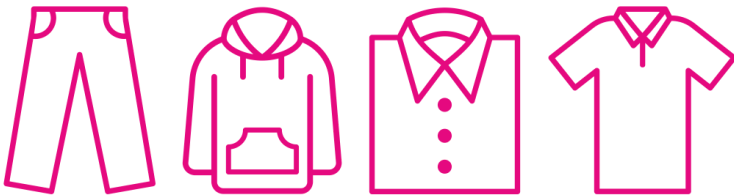




**BECOME A SPONSOR OF  
LONG MELFORD FC**

# **Memsaab** **of Lavenham** **FINEST INDIAN CUISINE**

**[www.memsaaboflavenham.co.uk](http://www.memsaaboflavenham.co.uk)**



# **TOP MARQUES** **UNIFORM SOLUTIONS**

Garment Decorators • Print & Copy Shop

**01787 313000**

**[www.topmarquesuniforms.co.uk](http://www.topmarquesuniforms.co.uk)**

# WELCOME TO STONEYLANDS

Good afternoon everyone. Let's start by welcoming the players, officials and supporters from Newmarket Town and hope they enjoy their short stay with us. We also extend a warm welcome to today's match officials.

It's been a frustrating couple of months on the pitch with a combination of close defeats and draws leaving us in a precarious position just above the relegation zone. We are approaching the stage of the season where we need to start turning the narrow defeats into draws and the draws into wins.

Today's opponents Newmarket Town started the season strongly, then went off the boil, but they are back in form winning their last three matches. As always it will be a difficult game but we are unbeaten at Stoneylands in seven games - hopefully that run continues today and it's an entertaining contest.

Off the pitch, the new clubhouse held its first live music event last Friday. It was a great night of 60s music as our chairman, Geoff Thomas and his FOD Band performed their Sixties Explosion Show. The evening was very well supported. AC

---

## LONG MELFORD FOOTBALL CLUB

Stoneylands Stadium, New Road, Long Melford, Suffolk, CO10 9JY

President: Richard Kemp  
Chairman: Geoff Thomas

Secretary: Vacant  
Treasurer: Stephen Adams  
Commercial Manager: Kenneth Dodd  
Programme & Website Editor: Andy Cussans  
Groundsman: Ivan Whitehart  
Catering: Debra Rowe  
Photographs: Stewart Ambrose

First Team Manager: Jamie Bradbury  
First Team Assistant Manager: Steve Chisholm  
First Team Coach: Jonathan Brown  
Reserve Team Manager: David Hennessey  
Reserve Team Coach: Rob Fayers  
Under 18s Manager: Nathan Bartlett  
Club Physio: Brian Dunster

New clubhouse managed by Long Melford  
Community Sports Trust

Matchday Programme produced by Top  
Marques Uniform Solutions in Sudbury



[www.facebook.com/longmelfordfc](http://www.facebook.com/longmelfordfc)



[www.twitter.com/longmelfordfc](http://www.twitter.com/longmelfordfc)



[www.instagram.com/longmelfordfc](http://www.instagram.com/longmelfordfc)



[www.longmelfordfc.com](http://www.longmelfordfc.com)



[club@longmelfordfc.com](mailto:club@longmelfordfc.com)



# Proud to Sponsor



## Get Your Exclusive Thurlow Nunn League Offer

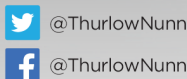
Simply visit our website to claim your EXCLUSIVE fan offer today!  
[www.thurlownunn.co.uk/tnlfans](http://www.thurlownunn.co.uk/tnlfans)



Over 1000 approved used vehicles in stock right now

10 dealerships across Norfolk, Suffolk, Cambridgeshire, Bedfordshire and Buckinghamshire

Brand new and used Vauxhall and Peugeot available as well as a large variety of all makes and models



[www.thurlownunn.co.uk](http://www.thurlownunn.co.uk)

Official fuel consumption in mpg (l/100km) and CO2 emissions (g/km) for the PEUGEOT range: Urban 34.9 – 80.7 (8.1– 3.5), Extra Urban 53.3 – 104.6 (4.9 – 2.9), Combined 46.3 – 94.2 (6.1 – 3.0) and CO2 136 – 95 (g/km).

Official Government Test Environmental Data. Fuel consumption figures mpg (l/100km) and CO2 emissions (g/km). Vauxhall range: Urban: 12.7 (22.3) – 74.3 (3.8), Extra-urban: 23.9 (11.8) – 91.1 (3.1), Combined: 18.0 (15.7) – 85.6 (3.3). CO2 emissions: 373 – 88g/km. Fuel consumption data and CO2 emission data are determined using the Worldwide harmonized Light vehicles Test Procedure (WLTP), and the relevant values are translated back to allow the comparability into NEDC, according to regulations R (EC) No. 715/2007, R (EU) No. 2017/1153 and R (EU) No. 2017/1151. The values do not take into account in particular use and driving conditions, equipment or options and may vary on the format of tyres. For more information on official fuel consumption and CO2 emission values, please visit [www.vauxhall.co.uk/WLTP](http://www.vauxhall.co.uk/WLTP).

# HISTORY

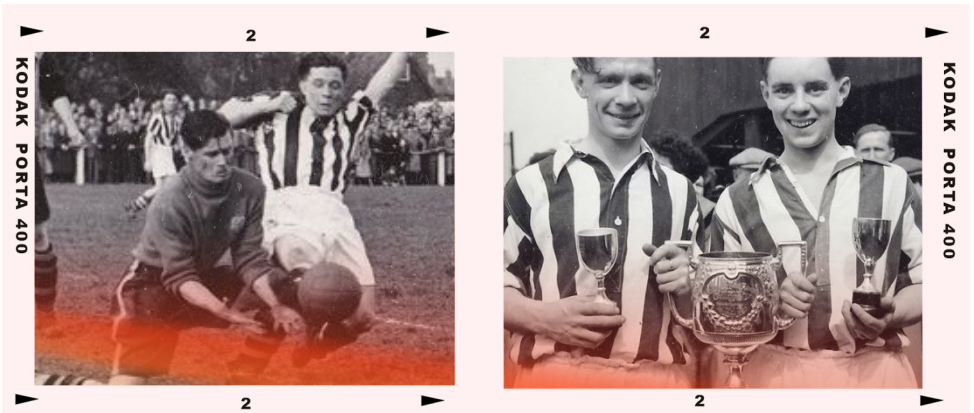
Long Melford Football Club has a long and illustrious history as one of the country's oldest clubs, with records dating back to 1868.

Looking back, history tells us that the first record of the Club that year was a 5-1 victory over Ipswich Rangers in a game that was played on the Church Green.

More than 150 years later, the club is still going strong, and continues to grow.

You can read all about the different stories from the club's history on our website, and if you have any of your own Long Melford tales, have pictures, or artefacts, we'd love to hear from you.

Drop us a line via our website contact form to help us keep Long Melford's history alive...



# HONOURS

- Eastern Counties First Division (1)
- Eastern Counties League Challenge Cup (1)
- Suffolk Senior Cup (8)
- Essex & Suffolk Border League (5)
- Essex & Suffolk Border League Cup (3)



# LAST TIME HERE

## Long Melford 1 - 1 Hadleigh United Thurlow Nunn Premier, Saturday 6 November

Jamie Griffiths scored a fine individual goal but Hadleigh deservedly got back on level terms, restoring some pride after their 5-0 defeat to the Villagers earlier in the season.

At times the game was played at a frenetic pace, which impacted on the quality of the football and the two beaming highlights of the game were the two goals that were scored.

Melford went ahead on fifteen minutes a free kick from the Melford half from Ross Waugh found the feet of JAMIE GRIFFITHS, who flicked the ball over the head of his marker, and from fully thirty yards his low drive left Hadleigh keeper Ben Mayhew floundering and found the net, a goal of great quality.

The equaliser on 39 minutes was also a good goal, a well flighted Hadleigh corner saw the unmarked JAKE EADY head with great force into the Melford net.

The visitors started the second half in supercharged mode and Melford were forced onto their defensive duties. The best chance of the half fell to Kade Ivatt, but his shot was saved point blank by Walker the Melford custodian. Whilst at the other end the ball ping ponged around the Hadleigh penalty area and it seemed that Hassan Ally had forced the ball in, but it was cleared off the line by a Hadleigh defender.

**LONG MELFORD:** Matt Walker, Dan Smith, Will Wingfield, Jake Jackson, Sam Mills, Ross Waugh, Hassan Ally (76), Ben Judge, Jacob Brown, Jamie Griffiths, Perry Newman (69)

Subs used: David Lopez (69), George Day (76) not used: Callum Hemson, James Dormady, Alfie Parnell Attendance: 135

# LAST TIME HERE



Dan Smith plays the ball out of defence under pressure from Hadleigh United's Kade Ivatt.



Jacob Brown battles for possession in midfield.



Jamie Griffiths takes on the Hadleigh defence.

Photos: Ambrose Photography (Stewart Ambrose)

# AROUND STONEYLANDS

## Reserves Review

David Hennessey's reserve team moved to the top of the Thurlow Nunn Reserve League on Saturday with a 13-0 victory against Woodbridge Town.

It's fair to say Woodbridge's second string are having difficulties at the moment but that shouldn't detract from the Melford performance. To score 13 in any game of football is a memorable achievement.

James Dormady (pictured) scored four, while Kyle Hurley (two), Perry Newman (two), Billy Gray (two), Alfie Parnell (two) and Kyran Quelch (one) were all on the scoresheet.

Compliments to both teams and the referee, for playing in what were the most atrocious conditions for many a day. Despite that aggravation the Melford team produced some fantastic football, quick first passing of a very high quality and some clinical finishing.

LONG MELFORD RES: Max Boulter, Charlie Coy, Tyrese Williams (55), Ismail Marshall (33), Deklyn Roy, Addy Roy, Jacob Brown (45), Kyran Quelch, Kyle Hurley (45), Bill Gray, James Dormady (33)

Subs (roll on roll off system): Alfie Parnell (33), Perry Newman (33), Jaydee Hambira (45), Elliot Walker(45), Josh Norris (55)



## Under 18s Update

U18 manager Nathan Bartlett looks back on two contrasting results against Witham Town (3-2) and Holland (3-5).

"It's been a real mixed bag the last couple of fixtures. Dealing with player losses in key areas from the dreaded winter colds. We were able to pick up three points against high flying Witham.

Against Holland we started well, but we had a sloppy 10-15 minute spell where we conceded five goals. We got a goal just before half time to make it 5-1.

There were a few tweaks at half time with our system and defensive line. We dominated the second half and scored two more with no reply, making the scoreline a little more respectable and left wondering what could have been if we had done that for 90 minutes. "





# FROM THE DUGOUT



**It's a month since we last played at home and we are finally at the end of a long couple of months that saw us play eight of our 12 games away from home and travel 900 miles, including a couple of horror midweek away trips.**

**But that's part and parcel of football at this level and fingers crossed, over the course of the season, things will level themselves out.**

**Results-wise, it's not looked brilliant, but performances have been good and give us optimism that we'll finally break away from the pack at the foot of the table.**

**We're creating chances, so hopefully will get a bit of luck in front of goal, while at the back, our defensive record is actually better than at the same stage of the season two years ago when we sat in fourth place.**

**Today we face Newmarket Town, who beat us at theirs in our opening league game of the season when we were probably still in the pub. They'll be expecting to do likewise today so we know we need to be at our very best against what is a top side who have just come out of a terrible run of results to hit form.**

**Once again, we'd like to thank you all for your support. We hope you all enjoy the game, get yourself something to eat and drink from the bar and have a safe journey home after.**

**We now have a run of three games here at home, and although we aren't playing next Saturday, we hope to see you back here on Saturday 18 December when we face Kirkley & Pakefield.**

**Have a good afternoon!  
The Management**

# THE VILLAGERS SQUAD

## Meet the Long Melford management and players...

**Jamie Bradbury (Manager)** – Now in his fifth season as manager, Jamie guided the club to its highest ever Step 5 points total in 2017/18 and a League Cup Final victory in 2019.

**Steve Chisholm (Player/Assistant Manager)** – A former Long Melford Youth player who has also played at AFC Sudbury, now combining playing with a management role.

**Jonathan Brown (Coach)** – A new addition to the coaching team last season, previously with Mildenhall Town.

**Brian Dunster (Physio)** – A former Melford player and now a very experienced physio, in his 11th season at the club. Previously with Cornard United and Halstead Town.

**Matt Walker (Goalkeeper)** – Experienced keeper who signed in September 2019 on a dual registration from Coggeshall Town, has also played for Halstead Town.

**Steve Adams (Defence/Forward)** - Club Captain for several years who lifted the First Division title in 2015 and League Cup in 2019. Began in the Under 18s and has now played 250 senior matches.

**Dan Smith (Defence)** – Previously with AFC Sudbury, a regular in the team in recent years approaching 150 appearances for the club.

**Sam Mills (Defence)** – Signed last summer from Haverhill Rovers in a season cut short due to Covid, has also played for Whitton United and AFC Sudbury.

**Ross Waugh (Defence)** – Ross is now in his ninth season at the club, making well over 250 appearances and chips in with the occasional goal.

**Dan Swain (Defence/Midfield)** - Over 150 appearances for the club and is comfortable at left back or in midfield. Previously with Cornard, Sudbury and Whitton.

**Jake Jackson (Defence/Midfield)** - Jake is in his eighth season with the club since joining from AFC Sudbury, a versatile player comfortable at the back or central midfield.

**Callum Hemson (Midfield)** – Joined in 2017 from AFC Sudbury Academy. Callum has impressed over the last couple of seasons at right back or a more advanced role.

# THE VILLAGERS SQUAD

**Elliot Walker (Midfield)** - Previously played for Border League side Boxted Lodgers, made a successful step up to this level making 50 appearances. Now on his way back from a serious knee injury.

**David Lopez (Midfield)** - Returns to the club following a two-year absence at Wivenhoe Town. Helped the Villagers reach the League Cup final in 2019.

**Jacob Brown (Midfield)** - Signed in December 2018, the experienced former AFC Sudbury and Mildenhall man was influential in the battle to stay up and win the League Cup in 2019.

**Alfie Parnell (Midfield/Forward)** – Impressed in the Reserves last term, played youth football at Needham Market. Scored his first senior goal in the FA Cup in August.

**Kyle Hurley (Forward)** - Signed in 2019 from Cornard United. A wide player who likes to run at defenders and delivers a great cross.

**Will Wingfield (Forward/Defence)** - Stepped up from U18s scoring on his debut in the FA Vase win at Woodbridge in 2012. In recent years has switched to left back.

**Jamie Griffiths (Forward)** - A welcome return to the club from Needham Market in 2019, a prolific scorer and Supporters' Player twice in 2015 and 2016.

**Hassan Ally (Forward)** - A regular in recent years apart from a brief spell with Whitton United. Entertaining player who won the Supporters' award in 2018.

**James Dormady (Forward)** – Under-18s player who has impressed in pre-season while playing for the Reserves and First Team.

**George Day (Forward)** – Returned to the club this summer. A prolific scorer in local football with Cavendish, also played for Thurlow Nunn clubs Stanway and Whitton.



# MATCH REPORT

## Thetford Town 0 - 0 Long Melford

### Thurlow Nunn Premier, Saturday 20 November

James Askew saved a penalty on his debut as the Villagers picked up a hard-earned point at Thetford Town.

Matt Walker was sidelined by injury so manager Jamie Bradbury brought in on loan from AFC Sudbury young keeper Askew for a debut.

After five minutes disaster struck for Melford and for the debut making keeper, coming off his line Askew dived to save at the feet of an onrushing Elliot Smith, who took a tumble. Up stepped the experienced Ryan Fuller, who fired hard and low towards the net, but keeper Askew dived to his right hand side to save the kick. A magnificent save and a great experience for your first game!

Chances came at both ends George Day and Perry Newman both through on goal for Melford only to see their efforts blocked. For Thetford their danger man was the speedy and tricky wideman Joao Varella, who provided crosses for Fuller and Kristian Dixon who both failed in finding the target.

The best effort of the second half was Sam Bond's shot which required a fine save from Melford keeper Askew to keep the scores level.

During the final stages there were strong shouts for a penalty at both ends. Firstly Callum Hemson appeared to be tripped in the Thetford penalty area, which brought no response from the referee.

Whilst five minutes before the end of the game Thetford's Michael Campbell went down in the box. Initially the referee ignored the penalty appeals, but after consulting with his assistant he pointed to the spot. However he then changed his mind again and awarded a corner! CHENOBERET

**LONG MELFORD:** James Askew, Dan Smith, Ben Judge, David Lopez, Ross Waugh, Jake Jackson, Perry Newman (63), Jacob Brown, Jamie Griffiths, David Lorimer, George Day (75)

Subs used: Alfie Parnell (75), Callum Hemson (63) not used: Ben Gooderham

# THURLOW NUNN LEAGUE

## PREMIER DIVISION TABLE

Pos	Team	P	W	D	L	GD	PTS
1	Gorleston	19	16	2	1	36	50
2	Wroxham	20	16	1	3	51	49
3	Mildenhall Town	19	13	3	3	28	42
4	Mulbarton Wanderers	19	12	3	4	14	39
5	Walsham Le Willows	21	11	4	6	14	37
6	Norwich United	20	10	5	5	11	35
7	Woodbridge Town	22	9	3	10	0	30
8	Ely City	21	9	3	9	-2	30
9	Newmarket Town	18	9	2	7	-3	29
10	March Town United	20	8	2	10	0	26
11	Fakenham Town	19	7	4	8	3	25
12	Thetford Town	21	6	5	10	-10	23
13	Lakenheath	19	5	6	8	0	21
14	Kirkley & Paketfield	19	6	3	10	-10	21
15	Hadleigh United	18	5	5	8	-5	20
16	Haverhill Rovers	21	5	4	12	-16	19
17	Long Melford	19	4	6	9	-6	18
18	Brantham Athletic	22	5	3	14	-21	18
19	Whitton United	17	4	5	8	-15	17
20	Swaffham Town	20	2	1	17	-69	7

## SATURDAY'S RESULTS

Brantham 0 Haverhill 1  
Newmarket 2 Walsham 1  
Swaffham 1 Mildenhall 8  
Thetford 3 Kirkley 2  
Woodbridge 1 Norwich 3

## TODAY'S FIXTURES

Brantham v Walsham  
Ely City v Norwich Utd  
Gorleston v Haverhill  
Kirkley v March  
Lakenheath v Woodbridge  
Long Melford v Newmarket  
Whitton v Mildenhall



**FOUL  
LANGUAGE**



# KEEP IT DOWN

**FOR THE KIDS**

# FIRST TEAM FIXTURES

Date	Home	KO/RES	Away	League	Ground
03/08/2021	Newmarket	3 - 0	Long Melford	Thurlow Nunn Premier Division	The Tristell Stadium
07/08/2021	Kirkley	1 - 1	Long Melford	The Emirates FA Cup	Walmer Road
11/08/2021	Long Melford	0 - 4	Kirkley	The Emirates FA Cup	Stoneylands
14/08/2021	Wroxham	7 - 1	Long Melford	Thurlow Nunn Premier Division	Trafford Park
28/08/2021	Long Melford	0 - 2	Thetford	Thurlow Nunn Premier Division	Stoneylands
01/09/2021	Long Melford	2 - 3	Woodbridge	Thurlow Nunn Premier Division	Stoneylands
04/09/2021	Long Melford	5 - 0	Swaffham	Thurlow Nunn Premier Division	Stoneylands
07/09/2021	Hadleigh	0 - 5	Long Melford	Thurlow Nunn Premier Division	Millfield
11/09/2021	Long Melford	3 - 0	Little Oakley	The Buildbase FA Vase	Stoneylands
18/09/2021	Long Melford	1 - 1	Whitton	Thurlow Nunn Premier Division	Stoneylands
25/09/2021	Burnham	3 - 4	Long Melford	The Buildbase FA Vase	Leslie Field Stadium
28/09/2021	Walsham	3 - 1	Long Melford	Thurlow Nunn Premier Division	Morrish Stadium
02/10/2021	Long Melford	1 - 1	Mulbarton	Thurlow Nunn Premier Division	Stoneylands
09/10/2021	Kirkley	0 - 3	Long Melford	Thurlow Nunn Premier Division	Walmer Road
13/10/2021	Long Melford	1 - 0	Haverhill R	Thurlow Nunn Premier Division	Stoneylands
16/10/2021	Norwich U	2 - 1	Long Melford	Thurlow Nunn Premier Division	Plantation Park
23/10/2021	Risborough	3 - 1	Long Melford	The Buildbase FA Vase	The BEP Stadium
27/10/2021	Long Melford	1 - 1	Brantham	Thurlow Nunn Premier Division	Stoneylands
30/10/2021	Fakenham	2 - 2	Long Melford	Thurlow Nunn Premier Division	Clipbush Park
02/11/2021	Ely	4 - 2	Long Melford	Thurlow Nunn Premier Division	Demcom Stadium
06/11/2021	Long Melford	1 - 1	Hadleigh	Thurlow Nunn Premier Division	Stoneylands
13/11/2021	Swaffham	2 - 0	Long Melford	Thurlow Nunn Premier Division	Shoemakers Lane
20/11/2021	Thetford	0 - 0	Long Melford	Thurlow Nunn Premier Division	Mundford Road
23/11/2021	Mildenhall	2 - 1	Long Melford	Thurlow Nunn Premier Division	Recreation Way
04/12/2021	Long Melford	3:00 pm	Newmarket	Thurlow Nunn Premier Division	Stoneylands
18/12/2021	Long Melford	3:00 pm	Kirkley	Thurlow Nunn Premier Division	Stoneylands

# FIRST TEAM FIXTURES

Date	Home	KO/RES	Away	League	Ground
27/12/2021	Long Melford	11:00 am	Walsham	Thurlow Nunn Premier Division	Stoneylands
03/01/2022	Brantham	3:00 pm	Long Melford	Thurlow Nunn Premier Division	Brantham Leisure Centre
08/01/2022	Long Melford	3:00 pm	Ely	Thurlow Nunn Premier Division	Stoneylands
15/01/2022	Woodbridge	3:00 pm	Long Melford	Thurlow Nunn Premier Division	Notcutts Park
22/01/2022	Long Melford	3:00 pm	Lakenheath	Thurlow Nunn Premier Division	Stoneylands
29/01/2022	Long Melford	3:00 pm	Mildenhall	Thurlow Nunn Premier Division	Stoneylands
05/02/2022	Whitton	3:00 pm	Long Melford	Thurlow Nunn Premier Division	King George V
12/02/2022	Long Melford	3:00 pm	Gorleston	Thurlow Nunn Premier Division	Stoneylands
15/02/2022	Kirkley	7:45 pm	Long Melford	Suffolk Premier Cup	Walmer Road
19/02/2022	Lakenheath	3:00 pm	Long Melford	Thurlow Nunn Premier Division	The Pit
26/02/2022	Long Melford	3:00 pm	Wroxham	Thurlow Nunn Premier Division	Stoneylands
05/03/2022	March	3:00 pm	Long Melford	Thurlow Nunn Premier Division	Robingoodfellow's Lane
12/03/2022	Long Melford	3:00 pm	March	Thurlow Nunn Premier Division	Stoneylands
19/03/2022	Mulbarton	3:00 pm	Long Melford	Thurlow Nunn Premier Division	The Common
26/03/2022	Gorleston	3:00 pm	Long Melford	Thurlow Nunn Premier Division	Emerald Park
02/04/2022	Long Melford	3:00 pm	Fakenham	Thurlow Nunn Premier Division	Stoneylands
16/04/2022	Long Melford	3:00 pm	Norwich U	Thurlow Nunn Premier Division	Stoneylands
18/04/2022	Haverhill R	3:00 pm	Long Melford	Thurlow Nunn Premier Division	New Croft

## Next at Stoneylands



**Long Melford v Kirkley & Pakefield**  
Thurlow Nunn Premier Division, Sat 18 December, 3pm



# TODAY'S OPPOSITION



## Newmarket Town Fact File

**Founded:** 1877    **Nickname:** The Jockeys

**Club colours:** Yellow and blue (home)

**League Form** (most recent on right): L D L W W W

**Top scorer (League & Cup):** James Hall 10

The club was formed at a meeting at the Star Hotel on 22 November 1877. Their first game was played against Pembroke College on 1 February 1878, losing 3–0. After World War I the club were playing in Division One of the Cambridgeshire League. They won the league title and the Cambridgeshire Senior Cup in 1919–20. However, they left the league in 1922. They joined Division One of the Suffolk & Ipswich League, but left after a single season to play in the Bury & District League. After winning the Cambridgeshire Challenge Cup in 1925–26, the club won Division One of the Bury & District League in 1926–27.

In 1928 Newmarket returned to Division One of the Ipswich & District League, winning the title in 1929–30 and 1933–34, after which they left the league again to join the United Counties League. They won the Suffolk Senior Cup in 1934–35, beating Kirkley 3–1 in the final. In 1937 the club joined the Eastern Counties League, finishing bottom of the league in their first season in the competition. During World War II they played in the East Anglian League, with Stan Mortensen guesting for them, before returning to the Eastern Counties League in 1946. They finished bottom of the league again in 1947–48 and went on to finish bottom of the table in each of the next four seasons, before leaving the league at the end of the 1951–52 season, which had seen them lose all 34 league matches, conceding 171 goals.

Newmarket joined the Peterborough & District League in 1956 and won the Premier Division title in 1957–58. They returned to the Eastern Counties League in 1959. They were runners-up in the league in 1966–67, but finished bottom of the table in 1971–72 and 1978–79. When the league gained a second division in 1988, the club became members of the Premier Division. During the 1990s Newmarket had much success in the Suffolk Premier Cup, winning the trophy in 1993–94, 1994–95, 1995–96 and 1998–99.

In 2007–08 Newmarket finished in the bottom two in the Premier Division and were relegated to Division One. Although they won Division One the following season and were promoted back to the Premier Division, they were relegated again at the end of the 2011–12 season. The club were Division One runners-up in 2012–13 and were promoted back to the Premier Division at the first attempt. They went on to win the League Cup the following season.



# EASYFUNDRAISING

**RAISE FUNDS FOR LONG MELFORD FC  
WHILE YOU SHOP ONLINE...**



**Did you know that whenever you buy anything online – from your weekly shop to buying clothes, from car insurance to your annual holiday – you could be raising free donations for Long Melford Football Club with easyfundraising?**

There are over 4,000 shops and sites on board ready to make a donation – including eBay, Argos, Amazon, Sainsbury's, Just Eat, John Lewis, ASOS, Booking.com and M&S – and it won't cost you a penny extra to help us raise funds.

All you need to do is:

1. Join Easyfundraising for free (via the club website under 'the club').
2. Every time you shop online, go to easyfundraising first to find the site you want and start shopping.
3. After you've checked out, the retailer will make a donation to Long Melford FC at no extra cost to you whatsoever!

There are no catches or hidden charges and we will be really grateful and delighted to receive your donations. Thank you for your support.

**Current total raised: £93.73**

# PLAYER NEWS



**All the best to Ben Judge who has decided to take up an offer to join Cornard United in the Thurlow Nunn First Division (South).**

Ben joined Long Melford in 2017 from the AFC Sudbury Academy and went on to make 92 appearances. He scored 12 goals and made 5 assists.

Ben was unlucky with injuries during his time at Stoneylands, missing lengthy spells with a recurring knee injury.

His best season in a Melford shirt came in 2019/20, a campaign cut short due to the first lockdown, in which Ben was voted Player of the Year in an online poll.

It goes without saying we thank Ben for his contribution over the past four years and wish him the best of luck for the future.

# LAST TIME OUT

## Mildenhall Town 2 - 1 Long Melford

### Thurlow Nunn Premier, Tue 23 November

The Villagers' final away match of 2021 ended in a close defeat at 3rd-placed Mildenhall Town.

Again Melford due to injuries were forced into making some last minute adjustments to their line-up. Central defender Kalum Benham came in from Bildeston and in goal came Dion-Curtis Henry, previously with Peterborough, Crawley and Crystal Palace.

After four minutes Mildenhall took the lead when the home team broke at speed, Scott Chaplin squaring the ball to the much travelled TANNER CALL to fire home. Not the start Melford wanted.

The Villagers soon drew level on sixteen minutes, when JAMIE GRIFFITHS turned his defender and his hard low drive from 25 yards completely defeated keeper Louis Johnson, and found the net via the inside of the post. Another quality goal from the ex Ipswich player.

The even first half turned into a winning score line for Mildenhall after fifty two minutes, when substitute NATHAN STEWART with his first touch found the Melford net. Having taken a pass from Charlie Hitch, Stewart fired in a fairly weak shot, which somehow squirmed under the body of the diving Henry in the Melford goal.

Both teams were guilty of playing poor square passes, and a result of a poor Melford pass, the eventual outcome saw Phil Weavers head inches wide for the Hall, at the other end Melford had responded and a powerful header from Griffiths hit the bar and went out of play. CHENOBERET

**LONG MELFORD:** Dion-Curtis Henry, Dan Smith, Will Wingfield, David Lopez (82), Kalum Benham, Jake Jackson, Ben Judge, Jacob Brown, Jamie Griffiths, David Lorimer, George Day (71)

Subs used: Hassan Ally (71), Jack Delaune (82) not used: Elliot Walker, Steve Chisholm, Jamie Bradbury

# VENUE HIRE



The new clubhouse at Stoneylands, known as The Melford, opened in September 2021 and is available to hire.

Facilities include a large community hall, a smaller meeting room, kitchen, bar and changing rooms.

To discuss your requirements and obtain a personally tailored quote, please contact Peter Turner on 07776 182860 or email [peterturner22@yahoo.co.uk](mailto:peterturner22@yahoo.co.uk)

Images appear courtesy of KHA Design Ltd.



# PLAYER STATISTICS

	2021/22	2021/22	Total for Club	
	Apps	Goals	A	G
STEVE ADAMS			261	39
HASSAN ALLY	16+2sub	3	159	24
JAMES ASKEW	1		1	
KALUM BENHAM	1		1	
MAX BOULTER	2		3	
JACOB BROWN	24	5	94	18
CHARLIE COY	1+1		2	
GEORGE DAY	16+5	6	29	6
JAMES DORMADY	6+8		14	
JAMIE GRIFFITHS	13+4	5	142	79
CALLUM HEMSON	5+2		97	10
DION-CURTIS HENRY	1		1	
KYLE HURLEY	3+2		28	
JAKE JACKSON	22	1	160	2
JASON JOSEPH	1		4	
BEN JUDGE	20	6	92	12
DAVID LOPEZ	13+3	1	66	7
DAVID LORIMER	3		10	6
SAM MILLS	20		33	
PERRY NEWMAN	3+4	1	8	1
ALFIE PARNELL	12+8	2	20	2
ASHLEY SKEGGS	2		247	46
CODY SKEGGS	2		2	
DANIEL SMITH	13+2		154	5
DANIEL SWAIN	3	1	166	12
ELLIOT WALKER	0+5		61	
MATT WALKER	18		50	
ANTHONY WAUGH	4		251	3
ROSS WAUGH	20	1	280	22
WILL WINGFIELD	19+1	4	258	53





# JOIN THE TEAM AT LONG MELFORD FC

Do you love football? Are you keen to work within the game? Are you interested in digital media? Would you love to help out on matchday?

If so, Long Melford wants you...

We're on the lookout to add to our team off the pitch to support the club in a number of different capacities.

As the club continues to grow, these responsibilities are also key in helping the First Team, Reserves and Under-18s sides.

The roles we are currently keen to recruit for are;

- Club Secretary
- Team Administrator / Fixtures Secretary
- Social Media, Marketing and Content
- Matchday Volunteers
- Matchday Bar Staff

Like everyone at Stoneylands, these positions are voluntary, unpaid roles, but will give you the opportunity to work within the game at Step 5 and play an important part in our growing club.

If you are interested in any of the above roles, please contact us via the contact form on our website at [www.longmelfordfc.com](http://www.longmelfordfc.com)



# BECOME A SPONSOR OF LONG MELFORD FC

If you would like to become a commercial partner with Long Melford FC through sponsorship, we'd welcome your support.

Visit our website to see our current available sponsorship packages...

**Memsaab**  
of Lavenham  
FINEST INDIAN CUISINE  
[www.memsaaboflavenham.co.uk](http://www.memsaaboflavenham.co.uk)

**NETHERGATE**  
CONCRETE & PAVERIES

**KHA**  
survey & design

**Carter Jonas**

[www.waareborder.com](http://www.waareborder.com)

**indigo**  
**ross**

**ADAM KEMP**  
BA Hons, DIP PFS, Cert II (MP & ER)  
**INDEPENDENT FINANCIAL ADVISOR**  
**07988 961240**

**JB**  
[www.JBFC.co.uk](http://www.JBFC.co.uk)

**JMP**  
ASBESTOS REMOVAL AND WASTE COLLECTION SERVICES  
E: [jmpsuffolk@gmail.com](mailto:jmpsuffolk@gmail.com)  
[www.jmpservices.co.uk](http://www.jmpservices.co.uk)

**CHERRY LANE**  
GARDEN CENTRE  
[Cherry-Lane.co.uk](http://Cherry-Lane.co.uk)

**PRECISION MADE JOINERY**

**A&B Glass**  
HOME IMPROVEMENTS  
[www.abglasshomeimprovements.co.uk](http://www.abglasshomeimprovements.co.uk)

East of England  
**CCOP**

Diamond Shine  
Window Cleaning & Property Maintenance  
[diamondshine-grammaticucci@hotmail.com](mailto:diamondshine-grammaticucci@hotmail.com)

**centra security**  
01473 250 250  
01473 250 250  
[www.centrasecurity.co.uk](http://www.centrasecurity.co.uk)

**Seago & Stopps**  
Commercial Cleaning Services  
Industrial Services  
T: 01753 882000  
F: 01753 409 405  
[www.seagoandstopps.co.uk](http://www.seagoandstopps.co.uk)

**HT**  
**SCAFFOLDING**

**ROBINS ROW**  
Insurance Brokers since 1867  
Hall Street, Long Melford, Suffolk CO10 9JH  
[www.robinsrow.com](http://www.robinsrow.com) Tel: 01787 378025  
Professional Service, Clear Advice

**DGH PEST CONTROL SERVICES SUDBURY**  
**07766 762957**  
[dghpestservices@gmail.com](mailto:dghpestservices@gmail.com)

**TOP MARQUES UNIFORM SOLUTIONS**  
Custom Tailor-made from 3000+ Styles  
**01787 313000** [www.topmarquesuniforms.co.uk](http://www.topmarquesuniforms.co.uk)

**CAR SERVICE CENTRE**  
SERVICING MOT & REPAIRS TYRES AIRCON  
**01787 373557**

**L.M. CLEANING SERVICES**  
Carpets & Upholstery • Pressure Washing • Office • Public  
**07970 830758**

The Melford Valley

**DGS Plastering**  
Specialist Zone Plasterers & All Aspects Of Plastering  
**07702 544 588**

**RD**  
Painter & Decorator  
T: 01787 581851 M: 07813 142323

# THE TEAMS



## LONG MELFORD

## NEWMARKET TOWN

Matt Walker  
 Sam Mills  
 Daniel Smith  
 Will Wingfield  
 Ross Waugh  
 Ant Waugh  
 Jake Jackson  
 David Lopez  
 Alfie Parnell  
 Hassan Ally  
 Jacob Brown (c)  
 James Dormady  
 Jamie Griffiths  
 George Day  
 Perry Newman  
 Jack Delaune

<input type="checkbox"/>	<input type="checkbox"/>
<input type="checkbox"/>	<input type="checkbox"/>
<input type="checkbox"/>	<input type="checkbox"/>
<input type="checkbox"/>	<input type="checkbox"/>
<input type="checkbox"/>	<input type="checkbox"/>
<input type="checkbox"/>	<input type="checkbox"/>
<input type="checkbox"/>	<input type="checkbox"/>
<input type="checkbox"/>	<input type="checkbox"/>
<input type="checkbox"/>	<input type="checkbox"/>
<input type="checkbox"/>	<input type="checkbox"/>
<input type="checkbox"/>	<input type="checkbox"/>
<input type="checkbox"/>	<input type="checkbox"/>
<input type="checkbox"/>	<input type="checkbox"/>
<input type="checkbox"/>	<input type="checkbox"/>
<input type="checkbox"/>	<input type="checkbox"/>
<input type="checkbox"/>	<input type="checkbox"/>
<input type="checkbox"/>	<input type="checkbox"/>

Alex Archer  
 Joe Bennett  
 Jonathan Carver  
 James Chivers  
 Sam Gomarsall  
 Henry Hall  
 Blake Kicks  
 Jordan Lake  
 Ben Landshoff  
 Ethan Murphy  
 Harvey Norman  
 Scott Paterson  
 Ben Robinson  
 Joe Robinson  
 James Seymour  
 Ryan Swallow  
 Lewis Whitehead  
 Jack Whiting



Manager: Jamie Bradbury  
 Assistant: Steve Chisholm  
 Coach: Jon Brown  
 Physio: Brian Dunster



Player/Manager: Michael Shinn



### MATCH OFFICIALS

Referee: Alex Shipp  
 Assistants: Daren Bigg & Michele Rinaldi